

PARENT PATHWAY

Bradford District 
Care Trust

LOCAL SERVICES WORKING TOGETHER with PARENTS

Fiona Graham
Health Visitor Clinical Lead
Bradford District Care Trust

You and Your Care
Children & Family Services


ANTENATAL PERIOD

Bradford District 
Care Trust

- **Early Liaison** between Midwifery, health visiting & G.P. for high risk groups
- **Early contact** with parents particularly where previous infant death; genetic risk factors; non-English speaking; teenage parents; diagnosis of a disorder for the baby; complex social risk factors

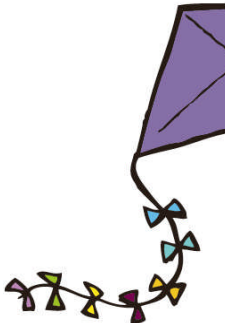


You and Your Care
Children & Family Services


Bradford District 
Care Trust

ANTENATAL PERIOD ctn.

- **Home visit/agreed venue** with parents - identify & agree early support needed & when
- **Start** with the parent's agenda
- **Relationship** building & listening
- **Access** to antenatal education with midwives & health visitors



You and Your Care
Children & Family Services

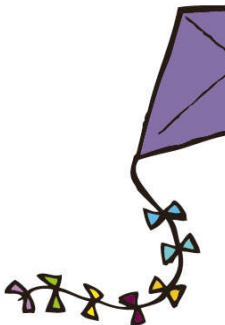
Bradford District 
Care Trust

ANTENATAL PERIOD ctn

Local services highlighted e.g. Children's Centres; antenatal classes; Doulas; stop smoking services; voluntary agencies; teenage parent midwife; social care

Language – information available in appropriate languages

Pre-CAF checklist (Common Assessment Framework)

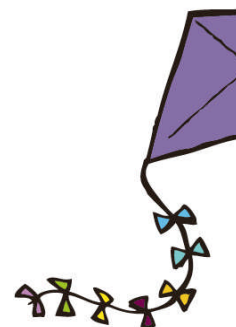


You and Your Care
Children & Family Services

BIRTH & EARLY MONTHS

Bradford District 
Care Trust

- **Liaison** with Neonatal unit; community midwife; paediatric outreach nurses
- **Birth Contact** – home or hospital as preferred by parents
- **Pre-CAF checklist** if not yet done & CAF as needed

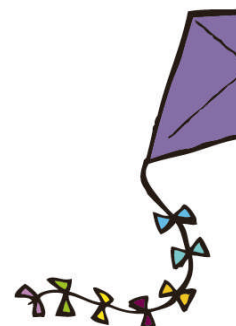


You and Your Care
Children & Family Services

BIRTH & EARLY MONTHS

Bradford District 
Care Trust

- ▶ **Encouraging** contact with local Children's Centre; voluntary agencies; breastfeeding support; postnatal groups
- ▶ **Continue** relationship building with parents & family – ideally with same health visitor
- ▶ **Maintain** liaison with other professionals/voluntary agencies



You and Your Care
Children & Family Services

IF AN INFANT DIES

- **Liaison** with Bereavement Support Midwife – Julie Cadman; paediatric outreach nurses; G.P. & as per health visiting standards
- **Contact** with family – card initially, follow up phone call to discuss a home visit
- **If contact/bereavement support** initially declined – further contact after 4- visit 6-8 weeks, and then at 3-4 months
- **Anniversary** – a card offering support would be helpful around this time



IF AN INFANT DIES

- **Provide information** of local support
- **SANDS** – leaflet; local group &/or be-frienders; Child Bereavement UK
- **Follow up** with parents and encourage postnatal care
- **Early support** at any subsequent pregnancy & back to the beginning of pathway

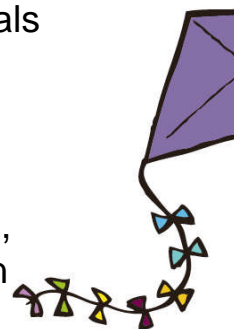


TRAINING

Bradford District 
Care Trust

- ▶ Parents involved in training for professionals
- ▶ Joint bereavement training for midwives, neonatal nurses & health visitors
- ▶ Cultural needs training
- ▶ Online network for bereavement midwives, neonatal nurses, health visitors involved in supporting parents after a baby's death:

<http://bereavement-network.rcm.org.uk/login>

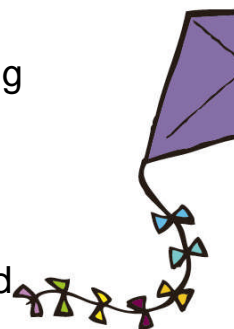


You and Your Care
Children & Family Services

WHAT HELPS

Bradford District 
Care Trust

- ▶ Listening to parents
- ▶ Empathy, respect & non-judgmental, caring attitude
- ▶ Staff from same ethnic origin
- ▶ Diary use starting in Neonatal Unit
- ▶ Clear process of how to give feedback and feeling supported during the process
- ▶ Knowledgeable and clear information
- ▶ Support to feel in control of what is happening

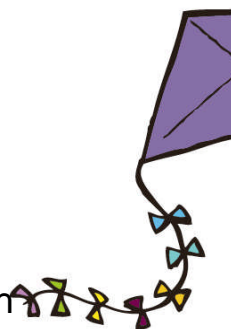


You and Your Care
Children & Family Services

NEXT STEP IDEAS

Bradford District 
Care Trust

- ▶ Service User group for health visiting
- ▶ Parent representatives at meetings e.g Health Visiting Standards
- ▶ Bereavement Support Health Visitor (HV)
- ▶ Working group of midwives, neonatal nurses/paediatric outreach nurses & health visitors to formalise pathway & strengthen communication links
- ▶ Establish standardised links with neonatal & paediatric outreach nurses

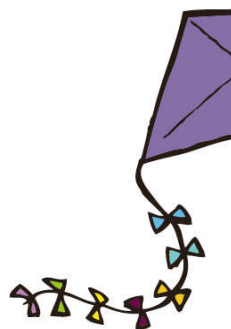


You and Your Care
Children & Family Services

THANK YOU

Bradford District 
Care Trust

To
Naz and Uzair
Nazreen and Bibi Mariam
Rezvana and Hashim & Haider
Shameem and Tabraiz Ali
and
Tahira and Muhammed Ruhail and
Muhammed Sudhais



You and Your Care
Children & Family Services